



Rowan Village & Lime Tree Court

Exciting independent living for people aged 55+





"I don't feel lonely, there are plenty of friends and a very good relationship among residents"



Welcome

At Staffs Housing, we're a community of staff and neighbours waiting to welcome you home and we're Staffs born and bred.

Rowan Village is an 'extra care' housing scheme situated in the heart of Stoke-on-Trent. It offers independent living for people aged 55+, along with communal facilities and lots of social activities and places to meet.

At Rowan Village you can live the life you want to. You can be as private as you like in your own apartment with your own front door, while in the village there's a range of entertainment and socialising opportunities you can be as involved in the life of the Village as you want to be.

Rowan Village is situated in Meir, Stoke-on-Trent, a small suburb close to Longton.

Living with Staffs Housing, you'll also get great customer service, dedicated maintenance service and access to extra support, such as money advice. **Because you and your home matter.**

"I always feel safe and secure. The apartments are an excellent size"



Apartments

The village has 93 one bed and two bed apartments, for either rent or shared ownership*. There is also a range of communal facilities and landscaped gardens to enjoy.

*shared ownership options only available in main village building

Each apartment has:

- A door entry system, so you know who's there before you let them into the building.
- Double glazing.
- Central heating.
- An emergency 24-hour call system.
- Shower-room with non-slip floor.
- Fitted kitchen with space for fridge/freezer and plumbing for washing machine.
- Telephone points and TV aerial.

Typical dimensions of a one-bed apartment

Living room 9' 11" x 13' 6"
Bedroom 9' 3" x 14' 10"
Kitchen 7' 7" x 10' 11"
Bathroom 6' 5" x 10' 11"

Typical dimensions of a two-bed apartment

Living room 11' 10" x 11' 4"
Bedroom 1 14' 7" x 11' 5"
Bedroom 2 7' 8" x 9' 5"
Kitchen 11' 10" x 8'
Bathroom 6' 5" x 9' 10"





"I never knew I could paint until I tried the painting classes"



Communal Facilities

The communal facilities in the main village are open to all residents.

- Restaurant
- Village Shop
- Lounge
- Conservatory
- Meeting room
- Overnight guest room
- Gym
- Hairdressing salon
- Laundry
- Beautiful landscaped gardens

Plus

- Regular entertainment
- Regular newsletter and What's On guide

Lime Tree Court

Lime Tree Court is an extension to Rowan Village, situated just across the road. It was built in 2020 and has 18 two bed apartments.

Those living at Lime Tree Court can access all of the facilities at Rowan Village, and get involved with social activities in the same way as Rowan residents too.

The extension was built on the former Station Hotel pub and hopes to bring a new lease of life to the site. We believe Lime Tree Court is a fantastic new addition to the local area, and hope it's residents will be very happy living here.



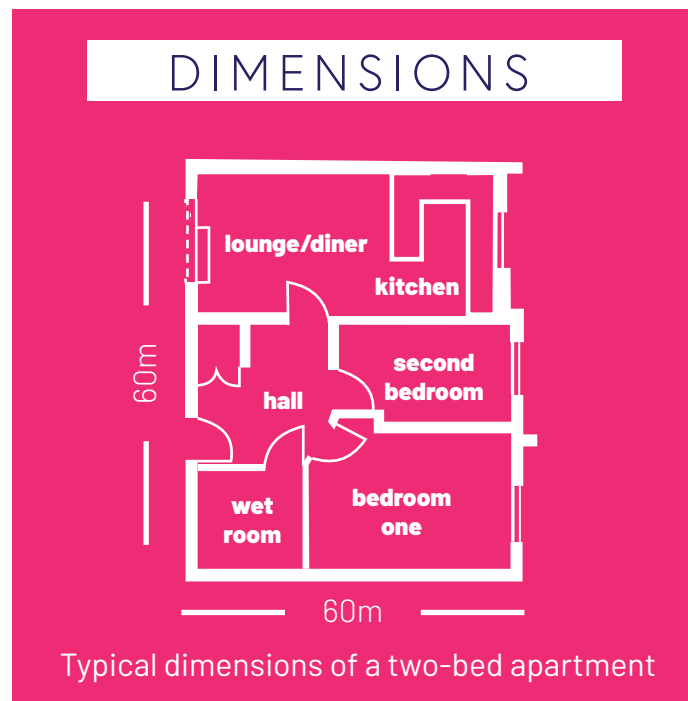
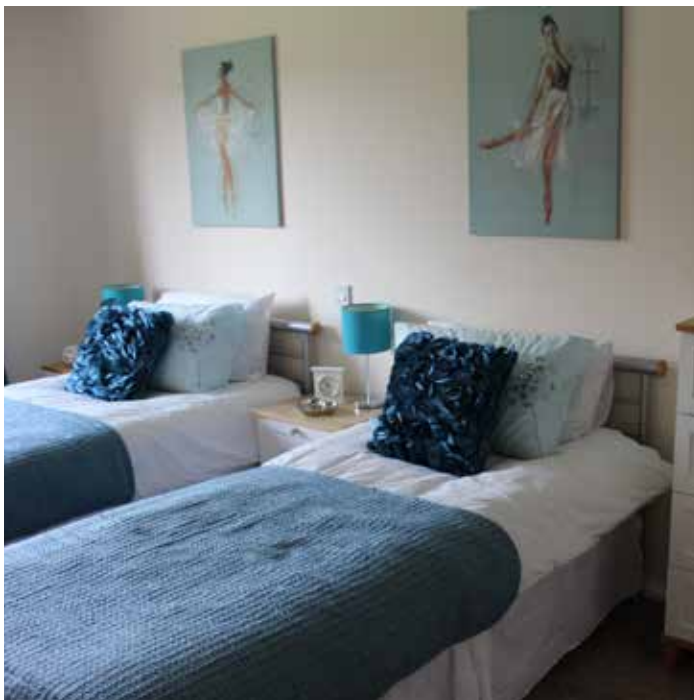
Apartments

Lime Tree Court is a brand new extension of Rowan Village. It offers 18 two bed apartments available to rent.

Residents of Lime Tree Court will have access to all of the communal facilities at Rowan Village.

EACH APARTMENT HAS:

- Modern fitted kitchen
- Wet room with non-slip floor
- 2nd bedroom (office or dining room)
- Emergency 24-hour alarm call system
- Juliet balcony
- Lift to each floor
- Communal courtyard
- Car park
- Electric vehicle charging point
- Double glazing
- Telephone points
- TV aerial
- Energy efficient heating and hot water system



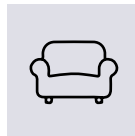
*images of similar scheme

Communal facilities

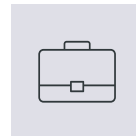
The communal facilities at Rowan Village are open to all residents at Lime Tree Court:



restaurant



lounge



guest room



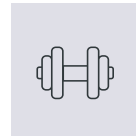
hairdressers



village shop



meeting room



gym



laundrette

There's also regular entertainment, weekly social activities and trips. Check out the what's on guide to find out more.



"I love it here because age is just a number. The people are my extended family and there's something for everyone."

Frequently asked questions

I am working full time. Can I still live at Rowan Village or Lime Tree Court?

Yes!

How much is the rent?

Please see separate information on rent and service charges. We don't include them on here because they change each year, and they may vary for different apartments.

Will I get Housing Benefit?

If you are entitled to Housing Benefit, you can still claim for it at Rowan Village or Lime Tree Court. We can carry out a check to make sure you get all the benefits you are entitled to.

Is there car parking?

Yes. At Rowan Village we have allocated car parking spaces for residents with cars. Visitors can park in the visitor area of the car park.

At Lime Tree Court we have a resident only car park available for the scheme.

Can I bring my pet with me?

We won't be able to accept any pets due to apartment living.

Can I come and look around?

Yes just make sure you call our team to book a viewing on 01782 744533 so someone will be there to show you around and answer any questions you may have.

What does my rent and other charges cover?

Your rent covers staffing the 24 hour alarm service, and the heating, lighting, furniture and equipment in communal areas.

As well as your rent, you pay your own council tax, electricity bills, and telephone charges.

How do I apply for an apartment?

Available homes are advertised on our website and on Rightmove, as well as on Stoke-on-Trent City Council's housing register.

To register with Stoke-on-Trent City Council, call 01782 233696. They will take your details over the phone and explain the process to you.



If you have difficulties reading this document, please let us know and we will look at alternative ways of providing the information.

Contact us.

Call 01782 744533

Hours 9am - 5pm Monday to Friday

Online www.staffshousing.org.uk

Email hello@staffshousing.org.uk

Let's get social.

 [@staffshousing](https://twitter.com/staffshousing)

 facebook.com/staffshousing

 www.youtube.com/staffshousing

Staffs Housing is a part of the Honeycomb family:



HONEYCOMB
GROUP



glow

